

Program and Project Management

Plan, manage and execute complex processes simply and efficiently

Benefits

- Effectively plan projects in Teamcenter, the same PLM system you use every day
- Consistently meet target dates with accurate, up-to-date project and resource information
- Maximize productivity with accurate data for every task
- Effectively coordinate resources across projects
- Drive execution of programs with unified goals, gates, timelines and targets
- Minimize time spent scheduling, statusing, and collecting information
- Provide visibility to resources, scope of work, pipeline information, project related costs, status, deliverables and more

Summary

As your products, organization and supply chain become more complex, so do the processes required to get products to market on time and on budget. Your managers and team leaders must be able to coordinate complex interrelated teams, data, and timelines. By itself, a traditional workflow tool is not enough. More robust project management capabilities are required to help you manage complex projects and realize today's complex products.

Standalone project management systems are disconnected from the data, people and processes required to execute those projects. Project leaders are constantly trying to manually reconcile information between multiple systems. The result is poor planning, missed delivery dates, cost overruns, and over- and underutilization of resources.

Teamcenter® software delivers program and project management solutions within your product lifecycle management (PLM) environment. You can manage your projects in one place and with one system, no matter how simple or complex they are. You can also integrate to your existing project management systems, automating the exchange of critical information.

Integrated project planning

Managers and team leaders can leverage powerful project management capabilities in Teamcenter, the same PLM tool they use daily. You don't have to be a project management expert to take advantage of an easy-to-use, robust project management solution. From basic scheduling with templates, milestones and dependencies to more advanced work breakdowns with baselines, budgeting, costing, and other functions you can manage any project. By managing projects in the same system used for the actual work being done, you have up-to-date resource information available, on demand. You can quickly and easily see resource availability to make better planning decisions.

Integrate execution with planning

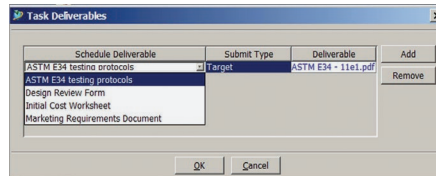
One of the key advantages to program and project management inside of Teamcenter is the ability to tie project planning with the actual execution of that project. Three key capabilities give you a powerful advantage:

Program and Project Management

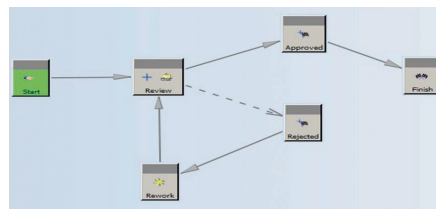
Features

- Robust project management capabilities inside of PLM
- Project execution tied to project planning
- Project tasks linked to PLM data and deliverables
- Automatic task, deliverable and project status updates
- Program management capabilities and integrations
- Program and project reporting with out-of-the-box reports

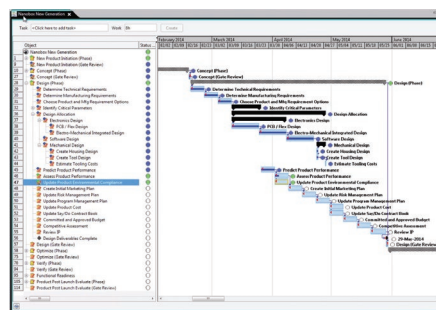
- Tasks can be tied directly to other PLM data. You can specify deliverables or reference information for a task. This means you always have what you need to complete a task and a clear definition of the deliverable. Project managers can access deliverables directly from the project timeline.



- Tasks can be tied to a workflow for more granular management of their execution. For example, you might have a task to “develop business case.” Using a workflow, you can guide the work required to create, review and approve the document behind the scenes.



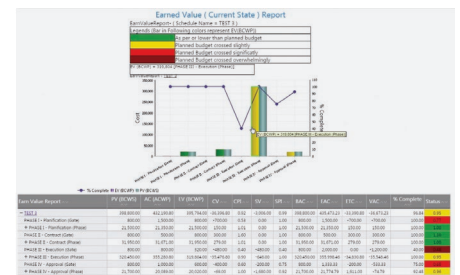
- Projects, deliverables, and all statuses automatically update as work progresses. When a team member completes an assignment, a deliverable is added, a workflow progresses or another project element moves forward, and the project is automatically updated to reflect the status.



See the big picture

Go beyond single project management to effectively coordinate entire

programs. With program management in Teamcenter, you have better visibility to resources, scope of work, pipeline information, project-related costs, status and more. With this visibility, you can effectively coordinate resources across your program and clearly understand impacts across projects. For more advanced program management capabilities, Teamcenter can integrate to third-party systems, such as Primavera®.



Maximize visibility

Teamcenter provides robust reporting capabilities across your programs and projects – from ad hoc reports that enable you to sort, filter and group data as you see fit, to configurable, out-of-the-box reports that provide graphical analysis of your projects and programs.

Siemens PLM Software
www.siemens.com/plm

Americas +1 314 264 8499
 Europe +44 (0) 1276 413200
 Asia-Pacific +852 2230 3308

© 2017 Siemens Product Lifecycle Management Software Inc. Siemens, the Siemens logo and SIMATIC IT are registered trademarks of Siemens AG. Camstar, D-Cubed, Femap, Fibersim, Geolus, I-deas, JT, NX, Omneo, Parasolid, Polarion, Solid Edge, Syncrofit, Teamcenter and Tecnomatix are trademarks or registered trademarks of Siemens Product Lifecycle Management Software Inc. or its subsidiaries in the United States and in other countries. All other trademarks, registered trademarks or service marks belong to their respective holders. 48753-A16 2/17 B

Industrial Technology Systems, s.r.o.
 Pod Karlovskou silnicí 32
 161 00 Praha 6
 Tel: 602 210 739
 Email: its@itscz.net

www.itscz.eu www.cadsystem.cz